

RIGFLEX™ FP

The RIGFLEX™ FP Gasket enables integrity testing of newly assembled and tightened flanged connections without requiring complete system pressurisation.



DESCRIPTION:

The RIGFLEX™ FP gasket is comprised of a precision machined, grooved core with dual Kammprofile elements on opposite sides of the gasket, faced with Corriculite™. The metal core has been drilled and fitted with a high-pressure test pipe and threaded port.

Connection to an external pressure source allows the controlled pressurisation of the annular space between the sealing faces of Corriculite™ faced Kammprofile. Monitoring the pressure enables the integrity of the connection to be directly assessed.

The gasket is supplied with a fire-safe, high-pressure cap, allowing post-test isolation of the test port.

The gasket can be provided with a hand-operated hydraulic or pneumatic pump and can also be supplied with fittings to suit existing pressurisation equipment.

APPLICATIONS:

RIGFLEX™ FP are dimensionally compliant with RF and FF flanges in ASME B16.5.

BENEFITS:

Testing large-volume piping systems can have significant cost implications. Large volumes of Nitrogen gas are usually required, as well as a dedicated leak-testing team to manage the process. Waiting for piping systems to fill to a desired test pressure can also take a considerable length of time.

RIGFLEX™ FP gaskets are designed for testing individual flanged connections, negating the requirement for complete system pressurisation.

Post-test, the gasket remains in situ, enabling the connection to be continuously monitored or re-tested.

- Significantly reduces testing time
- Improved HSE by reducing the need for testing personal and volume of (potentially old) piping systems exposed to high test pressures
- Considerable cost savings on test media, such as Nitrogen
- Monitoring of potential leakage after installation allows for proactive maintenance
- Continuous monitoring or spot testing of individual connection
- Corriculite™ facings mitigate against flange-face corrosion
- Fire safe per API 6FB

MATERIALS AND CERTIFICATION:

The RIGFLEX™ FP gasket is available in 316 stainless steel as standard (other materials available upon request) and is supplied with material certification (upon request).

All assembled pressure-containing components, test pipes, connectors and welds are thoroughly pressure-tested.

AVAILABILITY:

To suit ASME B16.5 raised face flanged connections

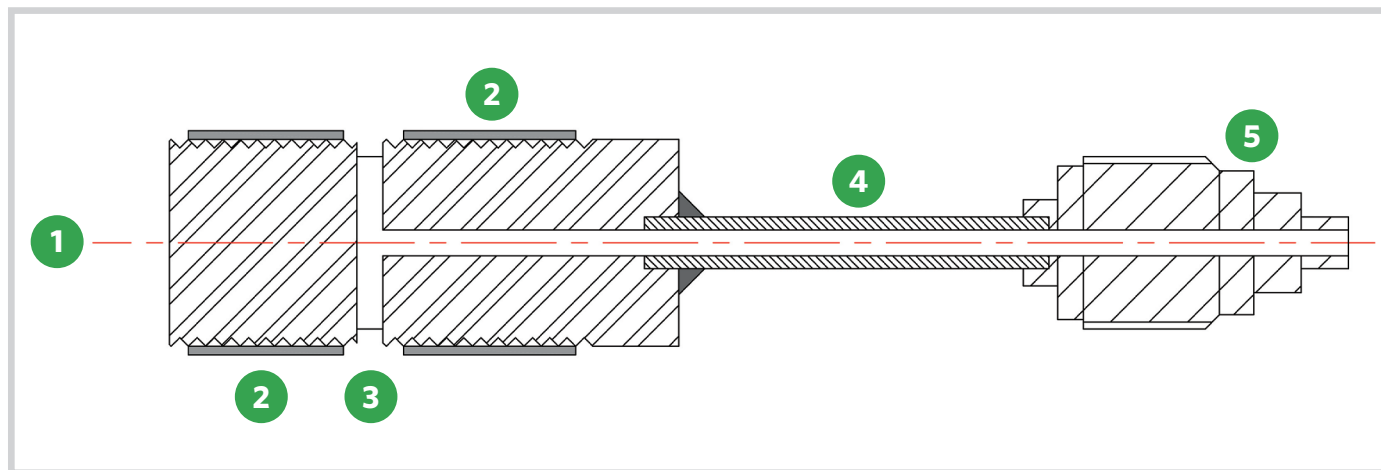
Sizes: ½" - 24" NPS

Class: 150 thru 2500

Corriculite™ Temperature Range: -196°C to +260°C

Other sealing materials are available upon request should temperature limits be exceeded.

GASKET SECTION THROUGH CONNECTOR:



LEGEND:

1. Flexpro™ (Kammprofile) core
2. Inner/outer Corriculite™ sealing faces
3. Groove/pressure passage hole
4. High-pressure test pipe
5. High pressure, test port connector

This Data Sheet refers to the material as supplied. The information contained herein is given in good faith, but no liability will be accepted by the Company in relation to same. We reserve the right to change the details given on this Data Sheet as additional information is acquired. Customers requiring the latest version of this Data Sheet should contact our Applications Engineering Department. The information given and, in particular, any parameters, should be used for guidance purposes only. The Company does not give any warranty that the product will be suitable for the use intended by the customer.